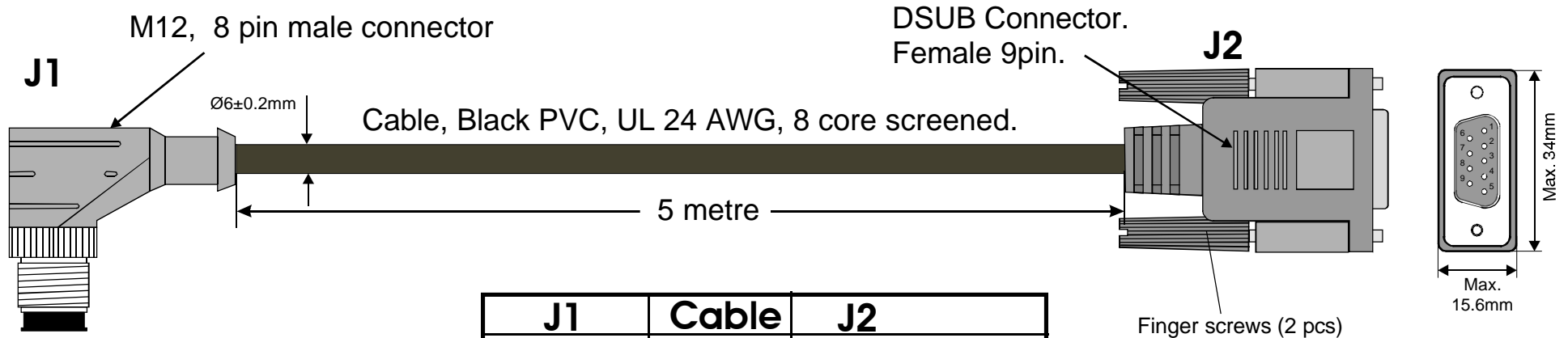


RS232 communication cable for MAC expansion modules



J1	Cable	J2
Pin no.	Color	Pin no.
1	White	
2	Brown	2
3	Green	3
4	Yellow	5
5	Grey	
6	Pink	
7	Blue	
8	Red	
Not connected	Screen	Housing

J1 The wires White, Grey, Pink, Blue and Red are not connected and must be insulated
J2 Pin 1, 4, 6, 7, 8, 9 must be left open

LT0082-11



JVL Industri Elektronik A/S
 Blokken 42 • DK-3460 Birkerød
 Tel: +45 4582 4440
 Fax: +45 4582 5550

RS232-M12-1-5-8
 Interface cable
 M12 to DSUB

Version - 1.1

Date: 27-9-06

Approved by:
 BVJ - 1.1

Drawn by:
 JVJ

